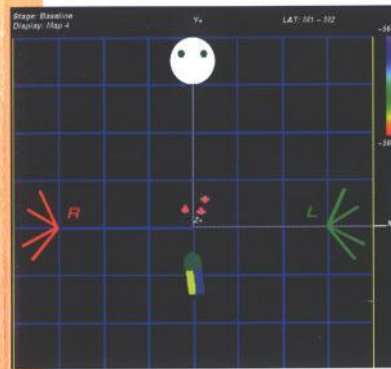


This patient's guide is designed to address some of the questions that you may have concerning the Carto. It aims to provide you with comprehensive information regarding the use of Carto in locating the site of the disturbance to the rhythm. If you have any issues of concern, please do not hesitate to discuss further with your cardiologist and nurses to clarify your doubts.

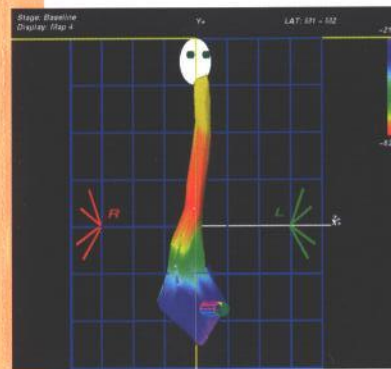
## What is Carto ?

The Carto is a device that provides electroanatomical mapping of the heart chamber. It maps the electrical signal of the heart and reconstructs it 3-dimensionally by using low-intensity magnetic fields, placed below the table on which the patient lies. The mapping is done by using a special catheter called the Biosense Webster Navi-Star, which has 4 electrodes and a micro-sensor at its tip. The catheter is moved to different points within the chamber by your cardiologist and the tip sensor captures real-time electrical signals regarding its anatomical position at each particular location. The information is then saved in the memory of the computer and presented in a 3-dimensional reconstruction of the whole chamber or specific structures within the chamber.

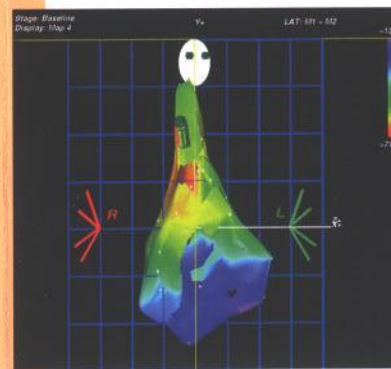
### 3-Dimensional Reconstruction of the Heart Chamber



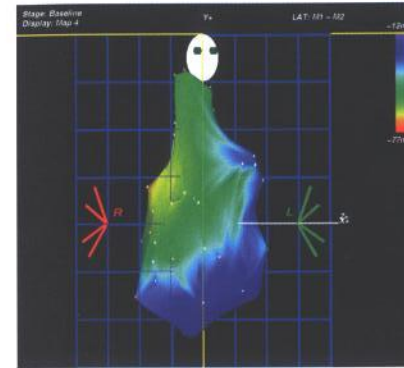
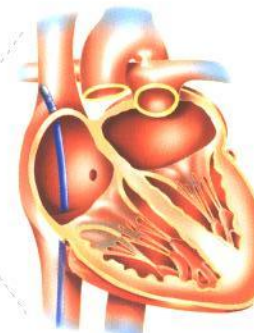
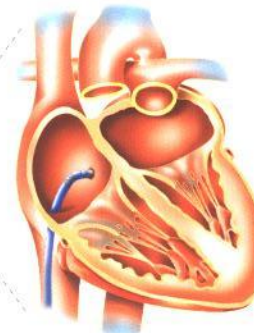
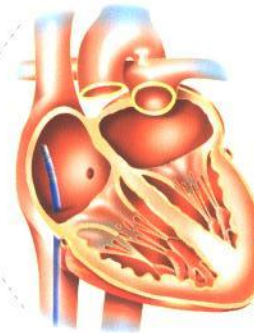
Beginning the reconstruction of the right atrium with the catheter tip at a specific location within the chamber



Acquiring the essential landmarks, like the coronary sinus, as the catheter is moved within the chamber



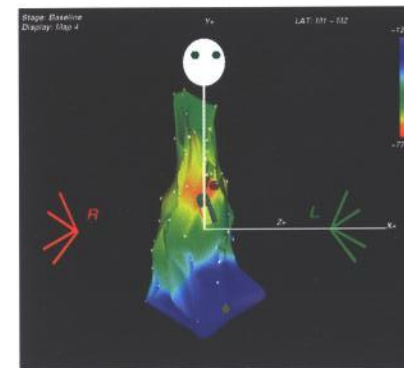
Building the reconstruction of the chamber as more points are acquired



Completion of the whole reconstruction of the right chamber

With this reconstructed visual presentation, your cardiologist will be able to determine the problem area, and hence implement the appropriate treatment, such as ablation, to terminate the abnormal rhythm.

### Ablation using the 3-Dimensional Reconstruction



Performing ablation with the same mapping catheter at the focal point of disturbance in the right atrium



